



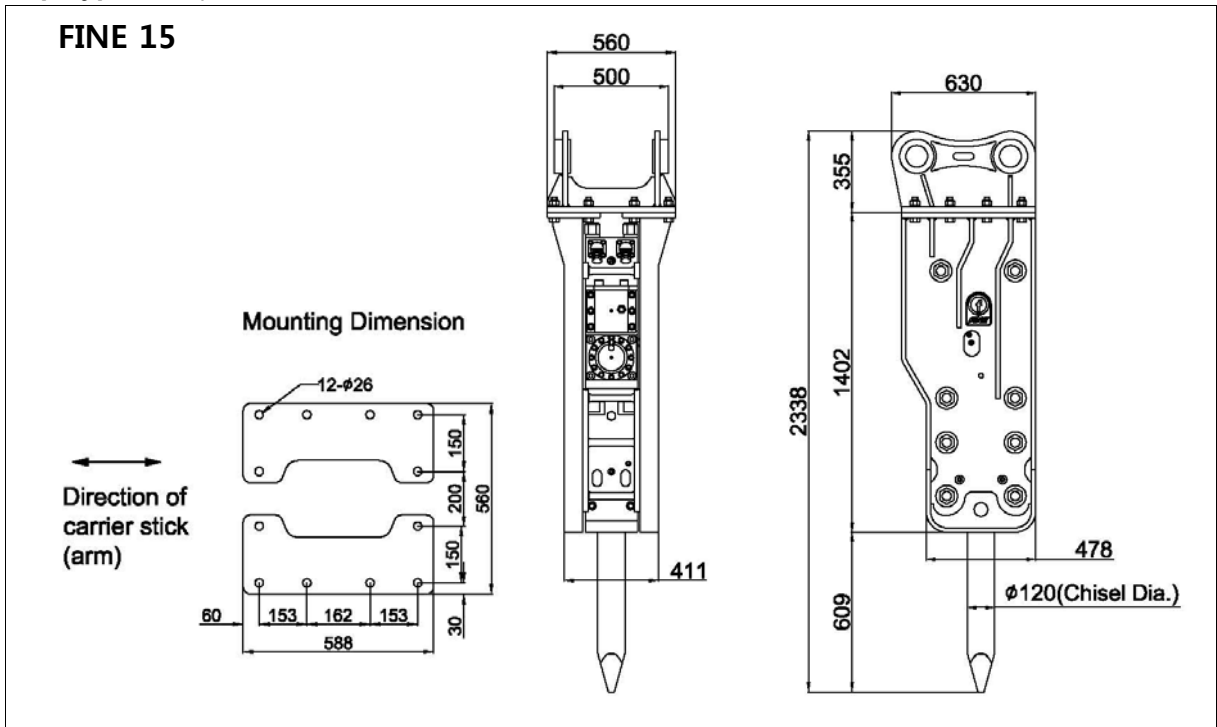
FINE 15 TECHNICAL SPECIFICATIONS

FS#	FHB-T15-E1
Cre. Date	1 SEP, 2011
Rev. Date	
Page	1 of 4

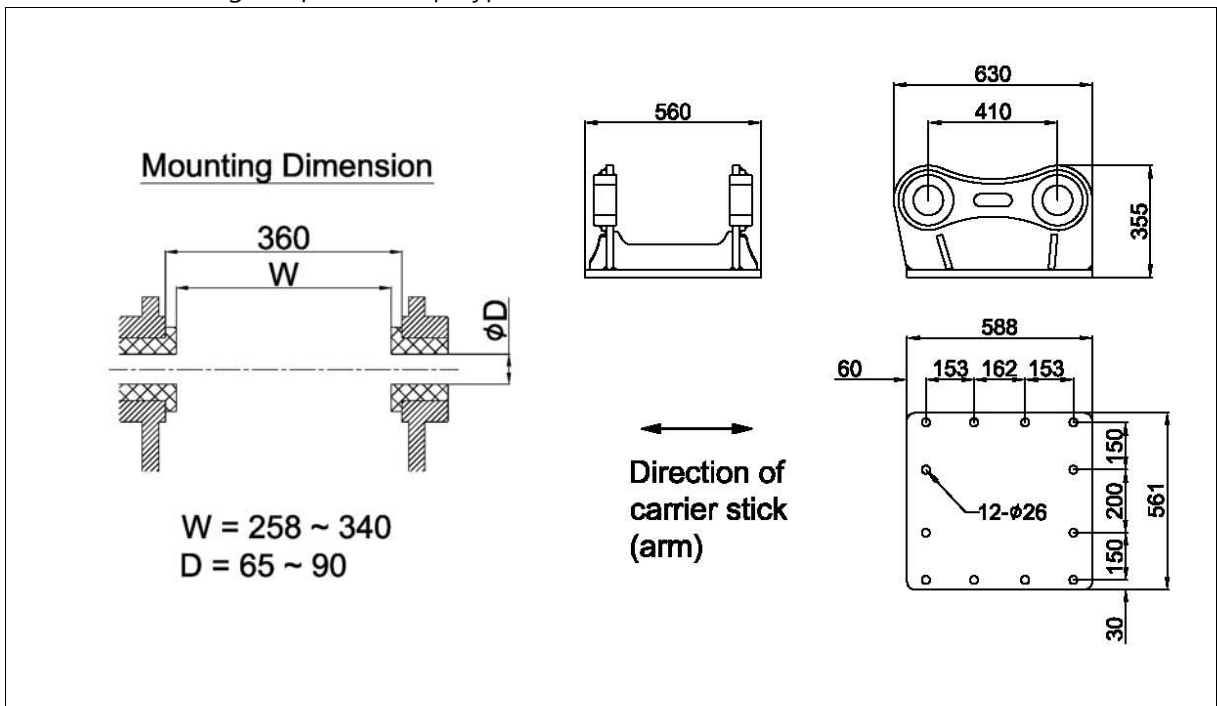
1. EXTERNAL DIMENSIONS

Unit: mm

● Top Type : Adapter Mount



● Standard Mounting Adapter for Top Type





FINE 15
TECHNICAL SPECIFICATIONS

FS#	FHB-T15-E1
Cre. Date	1 SEP, 2011
Rev. Date	
Page	2 of 4

2. BASIC SPECIFICATIONS

Bracket Version	Top Type			
Available Option				
2-speed control	Std.			
Dust protector	Opt.			
Auto-greasing kit	Opt.			
Working Weight ¹⁾	1,220 (2,690)		kg (lbs)	
Weight without chisel and mounting adapter	942 (2,077)		kg (lbs)	
Overall Length ²⁾	2,440 (95)		mm (in.)	
Weight of components				
Power-cell	510	(1124)	kg	(lbs)
Chisel(standard)	88	(194)	kg	(lbs)
Mounting adapter ³⁾	190	(419)	kg	(lbs)
Required Oil Flow	90 ~ 120	(24 ~ 32)	lpm	(gpm)
Operating Pressure	150 ~ 180	(2,175 ~ 2,615)	bar	(psi)
Blow Frequency	400 ~ 900		bpm	
Impact Energy	4,234	(3,125)	J	(ft.lbf)
Tool (chisel) Shank Diameter	120	(4.7)	mm	(in.)
Applicable Carrier Weight				
Optimal range	13 ~ 18	(29 ~ 40)	t	(klbs)
Available range	13 ~ 18	(29 ~ 40)	t	(klbs)

Notes :

- 1) Total weight including standard tool, standard mounting adapter and spacers but excluding hydraulic hoses, fittings and mounting pins.
- 2) The length measured from the tool tip of the standard tool to the top of the breaker including mounting adapter.
- 3) Including standard mounting adapter, fasteners and spacers (for Top Type)



FINE 15
TECHNICAL SPECIFICATIONS

FS#	FHB-T15-E1
Cre. Date	1 SEP, 2011
Rev. Date	
Page	3 of 4

3. INSTALLATION SPECIFICATIONS

Gas Charging Pressure ¹⁾			
Back-head (Piston accumulator) ²⁾	6 ~ 7	(87 ~ 102)	bar (psi)
High pressure accumulator	60	(870)	bar (psi)
Hydraulic Piping			
Line size (min. internal diameter)	19	(3/4)	mm (in.)
Acceptable back pressure (max.) ³⁾	10	(150)	bar (psi)
Hose connections of breaker			
Oil supply (IN) & return (OUT)	BSP 3/4" O-Ring Boss Female		
Pressure Relief (min.)			
	40 (600) + measured max. operating pressure		
Acceptable Hydraulic Oil			
Operating temperature ⁴⁾	-20 ~ +85	(-4 ~ +185)	°C (°F)
Viscosity	1000 ~ 10		cSt

Notes :





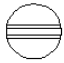

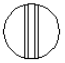
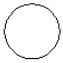
- 1) The prefill nitrogen gas pressure measured statically (breaker not operating) without down load on the tool at the stabilized gas temperature of +20 °C
- 2) The recommended value at the normal operating condition (supplied oil flow, oil temperature and viscosity, etc.)
- 3) The maximum allowed oil pressure at the breaker's connection point to the return line (measured statically without the breaker)
- 4) The allowed temperature limits when using the oil of viscosity grade 46



FINE 15
TECHNICAL SPECIFICATIONS

FS#	FHB-T15-E1
Cre. Date	1 SEP, 2011
Rev. Date	
Page	4 of 4

4. AVAILABLE TOOLS (CHISELS)

Shank Diameter	120 (4.7)				mm (in.)
	TYPE OF TOOL :				
	Wedge Point	Moil Point	In Line Point	Blunt Point	
Tool Diameter ¹⁾	120 (4.7)	120 (4.7)	120 (4.7)	120 (4.7)	mm (in.)
Tool Length	1200 (47)	1200 (47)	1200 (47)	1200 (47)	mm (in.)
Tool Weight	101.9 (224.7)	96.7 (213.2)	101.9 (224.7)	104.2 (229.7)	kg (lbs)
Tool Shape					
					

Notes :

1) The diameter of the tool portion outside the breaker body

- Other special designs are also available on request.