



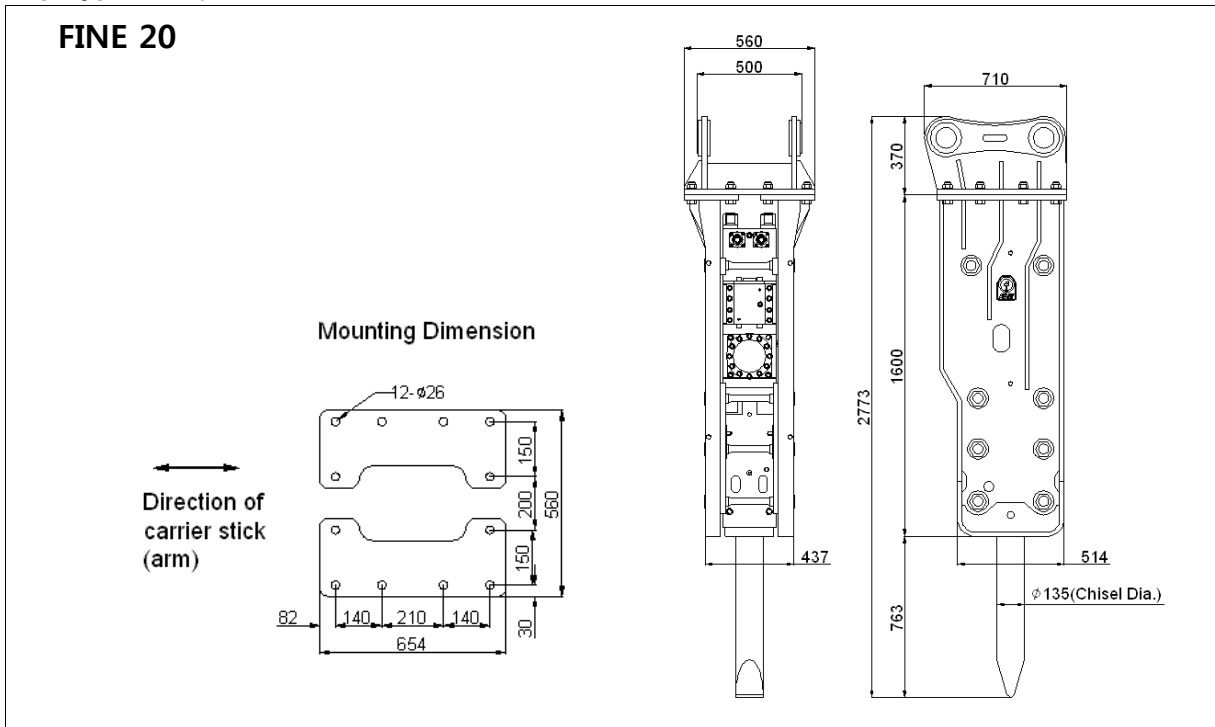
FINE 20 TECHNICAL SPECIFICATIONS

FS#	FHB-T20-E1
Cre. Date	28 APR, 2011
Rev. Date	
Page	1 of 4

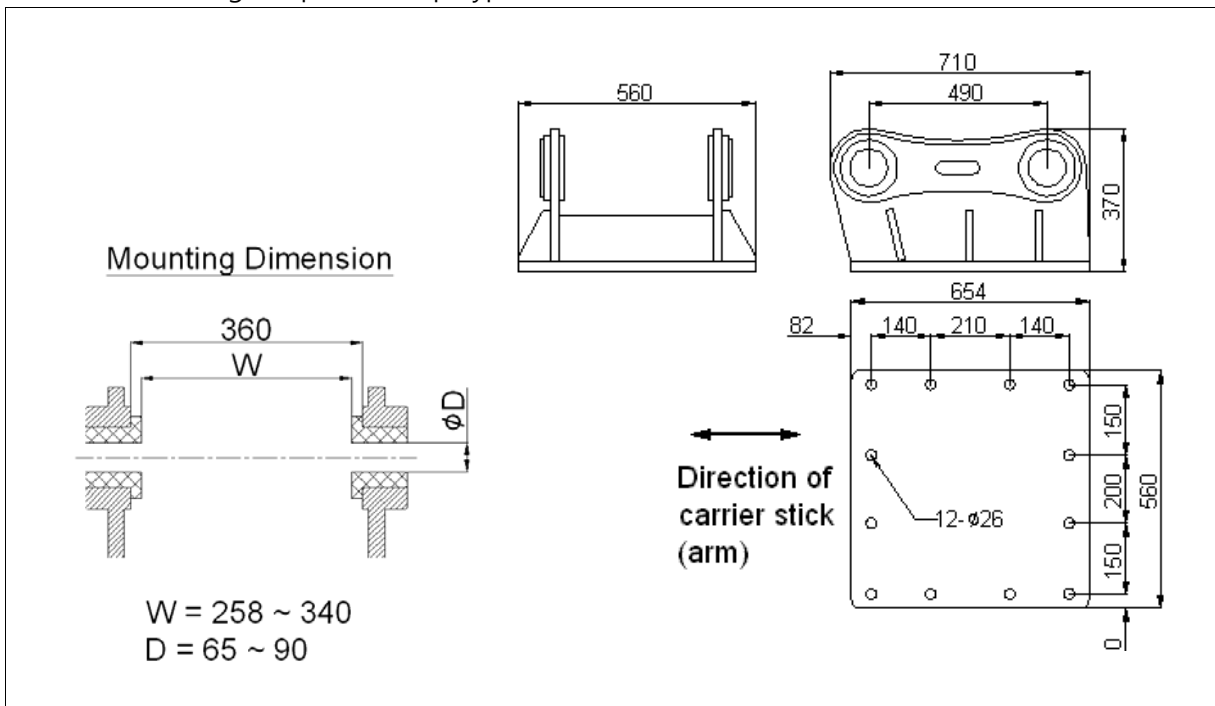
1. EXTERNAL DIMENSIONS

Unit: mm

● Top Type : Adapter Mount



● Standard Mounting Adapter for Top Type





FINE 20
TECHNICAL SPECIFICATIONS

FS#	FHB-T20-E1
Cre. Date	28 APR, 2011
Rev. Date	
Page	2 of 4

2. BASIC SPECIFICATIONS

Bracket Version	Top Type			
Available Option				
2-speed control	Std.			
Dust protector	Opt.			
Auto-greasing kit	Opt.			
Working Weight ¹⁾	1,790 (3,947)		kg (lbs)	
Weight without chisel and mounting adapter			kg (lbs)	
Overall Length ²⁾	2,773 (108)		mm (in.)	
Weight of components				
Power-cell		(1,603)	kg	(lbs)
Chisel(standard)	124	(274)	kg	(lbs)
Mounting adapter ³⁾			kg	(lbs)
Required Oil Flow	130 ~ 150	(34 ~ 40)	lpm	(gpm)
Operating Pressure	160 ~ 180	(2,321 ~ 2,611)	bar	(psi)
Blow Frequency	400 ~ 800		bpm	
Impact Energy	5,290	(3,904)	J	(ft.lbf)
Tool (chisel) Shank Diameter	135	(5.31)	mm	(in.)
Applicable Carrier Weight				
Optimal range	18 ~ 27	(40 ~ 53)	t	(klbs)
Available range	18 ~ 27	(40 ~ 53)	t	(klbs)

Notes :

- 1) Total weight including standard tool, standard mounting adapter and spacers but excluding hydraulic hoses, fittings and mounting pins.
- 2) The length measured from the tool tip of the ~~standard~~ ~~top of the bracket~~ to including mounting adapter.
- 3) Including standard mounting adapter, fasteners and spacers (for Top Type)



FINE 20
TECHNICAL SPECIFICATIONS

FS#	FHB-T20-E1
Cre. Date	28 APR, 2011
Rev. Date	
Page	3 of 4

3. INSTALLATION SPECIFICATIONS

Gas Charging Pressure ¹⁾				
Back-head (Piston accumulator) ²⁾	6 ~ 7	(87 ~ 102)	bar	(psi)
High pressure accumulator	60	(870)	bar	(psi)
Pressure Adjust Valve Setting ³⁾ (number of turns open from the full-close)	2.5 ~ 3.0		turns	
Hydraulic Piping				
Line size (min. internal diameter)	25	(1)	mm	(in.)
Acceptable back pressure (max.) ⁴⁾	10	(150)	bar	(psi)
Hose connections of breaker				
Oil supply (IN) & return (OUT)	BSP 1" O-Ring Boss Female			
Pressure Relief (min.)	40 (600) + measured max. operating pressure			
Acceptable Hydraulic Oil				
Operating temperature ⁵⁾	-20 ~ +85	(-4 ~ +185)	°C	(°F)
Viscosity	1000 ~ 10		cSt	

Notes :




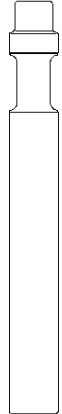
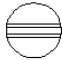

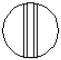
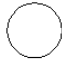
- 1) The prefill nitrogen gas pressure measured statically (breaker not operating) without down load on the tool at the stabilized gas temperature of +20 °C
- 2) The recommended value at the normal operating condition (supplied oil flow, oil temperature and viscosity, etc.)
- 3) The value which is set at the factory to obtain the nominal operating pressure at the middle value of oil flow and back-head gas pressure.
- 4) The maximum allowed oil pressure at the breaker's connection point to the return line (measured statically without the breaker)
- 5) The allowed temperature limits when using the oil of viscosity grade 46



FINE 20
TECHNICAL SPECIFICATIONS

FS#	FHB-T20-E1
Cre. Date	28 APR, 2011
Rev. Date	
Page	4 of 4

4. AVAILABLE TOOLS (CHISELS)

Shank Diameter	135 (5.31)				mm (in.)
	TYPE OF TOOL :				
	Wedge Point	Moil Point	In Line Point	Blunt Point	
Tool Diameter ¹⁾	135 (5.31)	135 (5.31)	135 (5.31)	135 (5.31)	mm (in.)
Tool Length	1200 (47)	1200 (47)	1200 (47)	1200 (47)	mm (in.)
Tool Weight	124.4 (274.3)	120 (264.6)	124.4 (274.3)	131.4 (289.7)	kg (lbs)
Tool Shape					
					

Notes :

1) The diameter of the tool portion outside the breaker body

- Other special designs are also available on request.