



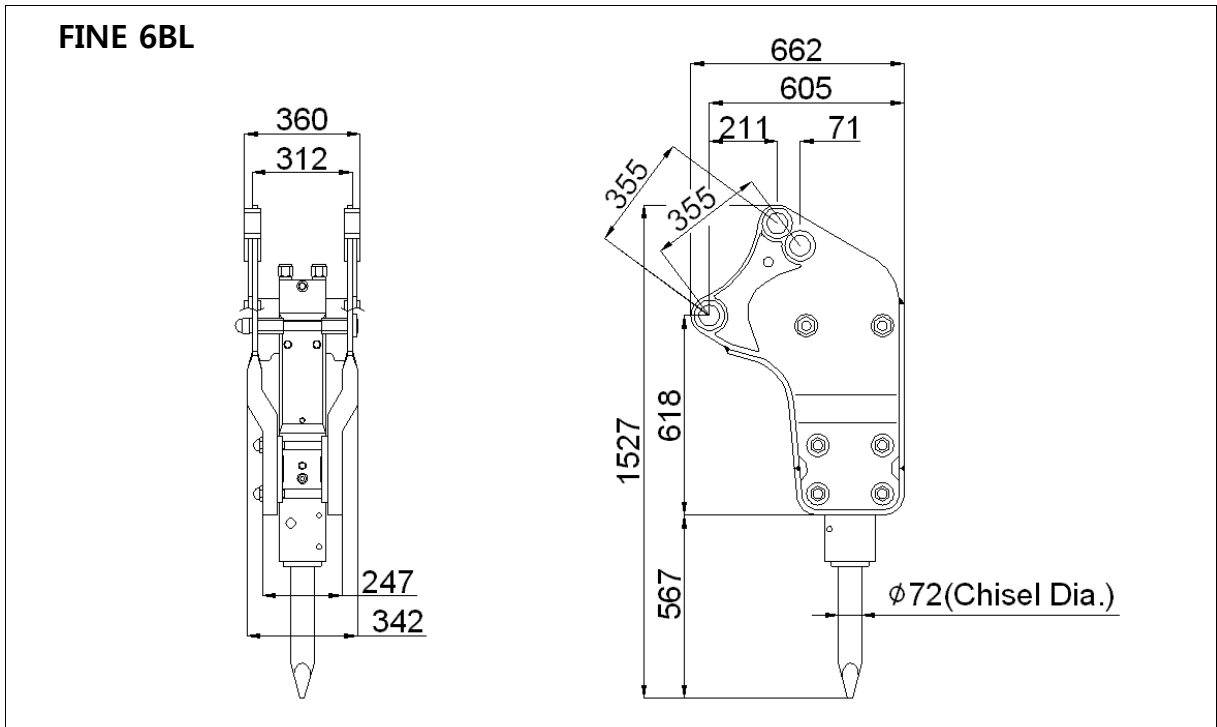
# FINE 6BL TECHNICAL SPECIFICATIONS

|           |              |
|-----------|--------------|
| FS#       | FHB-T6-E1    |
| Cre. Date | 28 APR, 2011 |
| Rev. Date |              |
| Page      | 1 of 4       |

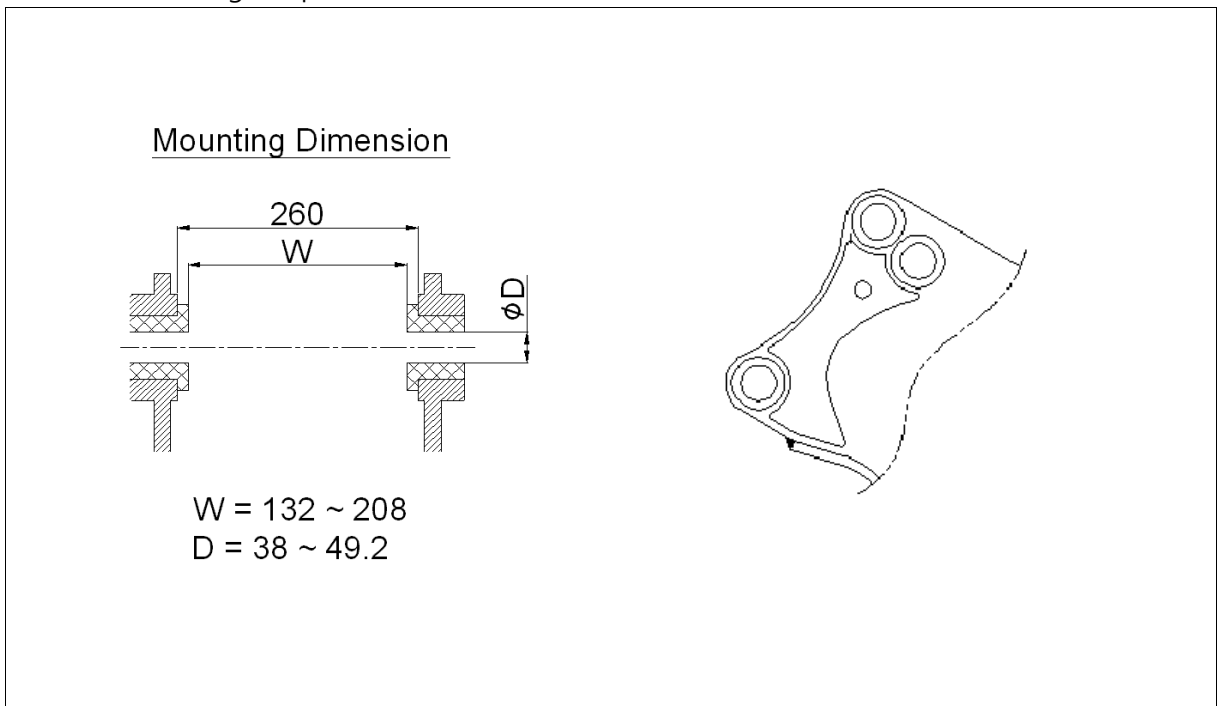
## 1. EXTERNAL DIMENSIONS

Unit: mm

### ● Backho Loader



### ● Standard Mounting Adapter for Backho Loader





**FINE 6BL**  
**TECHNICAL SPECIFICATIONS**

|           |              |
|-----------|--------------|
| FS#       | FHB-T6-E1    |
| Cre. Date | 28 APR, 2011 |
| Rev. Date |              |
| Page      | 2 of 4       |

**2. BASIC SPECIFICATIONS**

| Bracket Version                            | Backho Loader |                 |             |
|--|---------------|-----------------|-------------|
| Available Option                           |               |                 |             |
| 2-speed control                            | Std.          |                 |             |
| Dust protector                             | Opt.          |                 |             |
| Auto-greasing kit                          | Opt.          |                 |             |
| Working Weight <sup>1)</sup>               | 400<br>(882)  |                 | kg<br>(lbs) |
| Weight without chisel and mounting adapter |               |                 | kg<br>(lbs) |
| Overall Length <sup>2)</sup>               | 1,535<br>(60) |                 | mm<br>(in.) |
| Weight of components                       |               |                 |             |
| Power-cell                                 |               |                 | kg (lbs)    |
| Chisel(standard)                           | 18            | (40)            | kg (lbs)    |
| Mounting adapter <sup>3)</sup>             |               |                 | kg (lbs)    |
| Required Oil Flow                          | 30 ~ 50       | (8 ~ 13)        | lpm (gpm)   |
| Operating Pressure                         | 90 ~ 130      | (1,305 ~ 1,885) | bar (psi)   |
| Blow Frequency                             | 400 ~ 1,500   |                 | bpm         |
| Impact Energy                              | 849           | (627)           | J (ft.lbf)  |
| Tool (chisel) Shank Diameter               | 72            | (2.8)           | mm (in.)    |
| Applicable Carrier Weight                  |               |                 |             |
| Optimal range                              | 5 ~ 8         | (11 ~ 18)       | t (klbs)    |
| Available range                            | 5 ~ 8         | (11 ~ 18)       | t (klbs)    |

Notes :

- 1) Total weight including standard tool, standard mounting adapter and spacers but excluding hydraulic hoses, fittings and mounting pins.
- 2) The length measured from the tool tip of the standard tool to the top of the breaker including mounting adapter.
- 3) Including standard mounting adapter, fasteners and spacers (for Backho Loader)



**FINE 6BL**  
**TECHNICAL SPECIFICATIONS**

|           |              |
|-----------|--------------|
| FS#       | FHB-T6-E1    |
| Cre. Date | 28 APR, 2011 |
| Rev. Date |              |
| Page      | 3 of 4       |

**3. INSTALLATION SPECIFICATIONS**

|   |  |             |     |       |
|---|--|-------------|-----|-------|
| Gas Charging Pressure <sup>1)</sup>           |  |             |     |       |
| Back-head (Piston accumulator) <sup>2)</sup>  | 16 ~ 17  | (232 ~ 247) | bar | (psi) |
| Hydraulic Piping                              |  |             |     |       |
| Line size (min. internal diameter)            | 13   | (1/2)       | mm  | (in.) |
| Acceptable back pressure (max.) <sup>3)</sup> | 10   | (150)       | bar | (psi) |
| Hose connections of breaker                   |  |             |     |       |
| Oil supply (IN) & return (OUT)                | BSP 1/2" O-Ring Boss Female                    |             |     |       |
| Pressure Relief (min.)                        | 40 (600) + measured<br>max. operating pressure |             |     |       |
| Acceptable Hydraulic Oil                      |  |             |     |       |
| Operating temperature <sup>4)</sup>           | -20 ~ +85                                      | (-4 ~ +185) | °C  | (°F)  |
| Viscosity                                     | 1000 ~ 10                                      |             | cSt |       |

Notes :





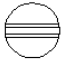

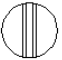
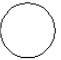
- 1) The prefill nitrogen gas pressure measured statically (breaker not operating) without down load on the tool at the stabilized gas temperature of +20 °C
- 2) The recommended value at the normal operating condition (supplied oil flow, oil temperature and viscosity, etc.)
- 3) The maximum allowed oil pressure at the breaker's connection point to the return line (measured statically without the breaker)
- 4) The allowed temperature limits when using the oil of viscosity grade 46



## FINE 6BL TECHNICAL SPECIFICATIONS

|           |              |
|-----------|--------------|
| FS#       | FHB-T6-E1    |
| Cre. Date | 28 APR, 2011 |
| Rev. Date |              |
| Page      | 4 of 4       |

### 4. AVAILABLE TOOLS (CHISELS)

|                             |   |   |   |   |          |
|-----------------------------|---|---|---|---|----------|
| Shank Diameter              | 72 (2.7)  |   |   |   | mm (in.) |
|                             | <b>TYPE OF TOOL :</b>   |   |   |   |          |
|                             | Wedge Point   | Moil Point  | In Line Point   | Blunt Point   |          |
| Tool Diameter <sup>1)</sup> | 72 (2.7)  | 72 (2.7)  | 72 (2.7)  | 72 (2.7)  | mm (in.) |
| Tool Length                 | 697 (29)  | 697 (29)  | 697 (29)  | 697 (29)  | mm (in.) |
| Tool Weight                 | 17.9 (39.5)   | 17.3 (38.1)   | 17.9 (39.5)   | 18.8 (41.4)   | kg (lbs) |
| Tool Shape                  |   |   |   |   |          |
|                             |  |  |  |  |          |

Notes :

1) The diameter of the tool portion outside the breaker body

- Other special designs are also available on request.