

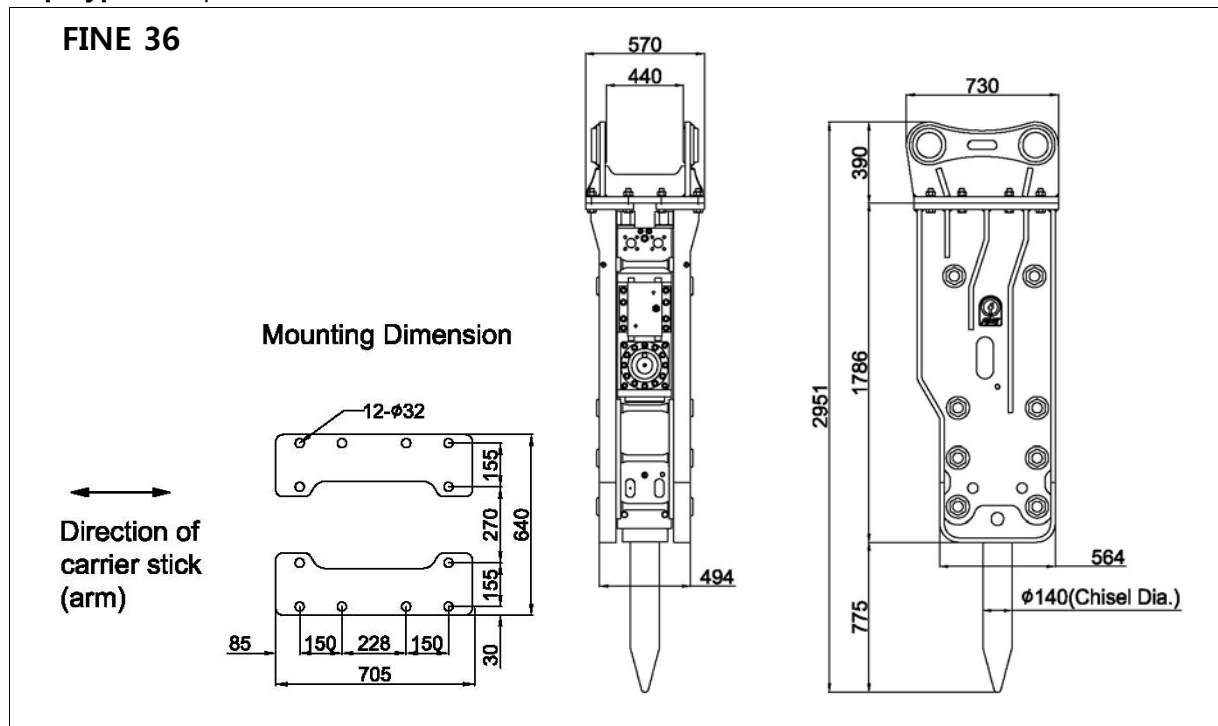
# **FINE 36** **TECHNICAL SPECIFICATIONS**

|           |               |
|-----------|---------------|
| FS#       | FHB-T36-E1    |
| Cre. Date | 30 MAR , 2012 |
| Rev. Date |               |
| Page      | 1 of 4        |

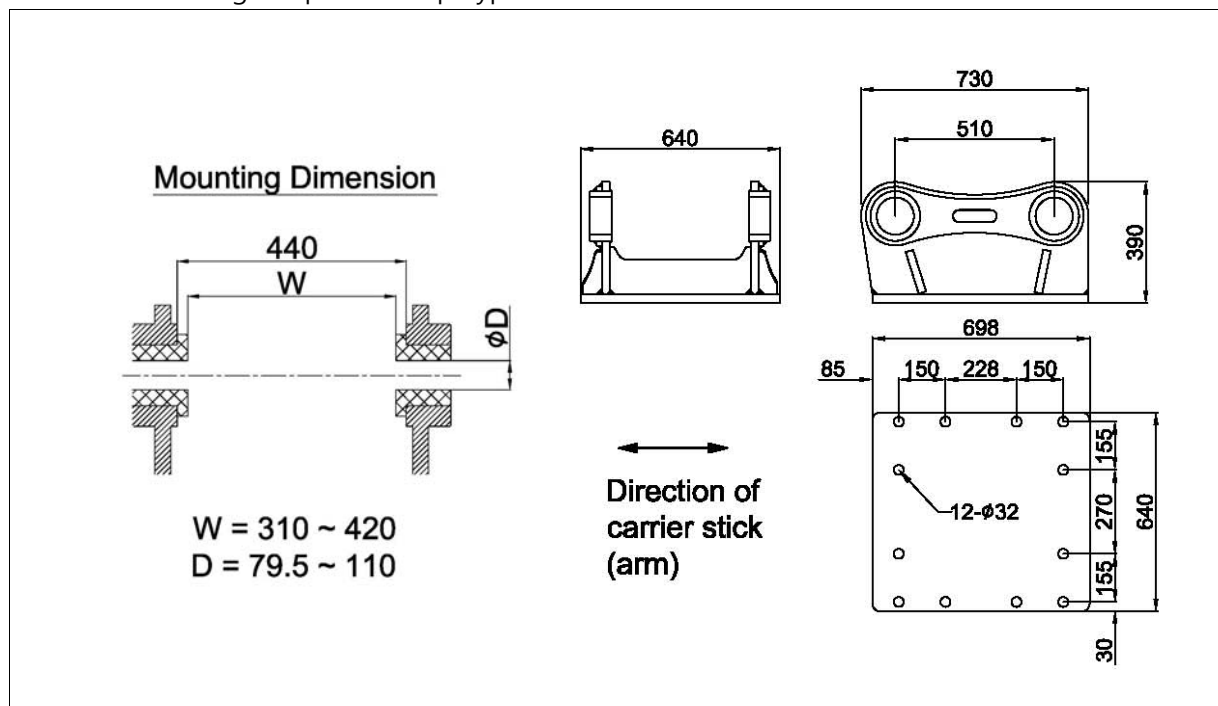
## **1. EXTERNAL DIMENSIONS**

Unit: mm

### ● **Top Type** : Adapter Mount



### ● **Standard Mounting Adapter for Top Type**





# **FINE 36** **TECHNICAL SPECIFICATIONS**

|           |               |
|-----------|---------------|
| FS#       | FHB-T36-E1    |
| Cre. Date | 30 MAR , 2012 |
| Rev. Date |               |
| Page      | 2 of 4        |

## **2. BASIC SPECIFICATIONS**

| Bracket Version                            | Top Type  |                 |       |          |
|--|-----------|-----------------|-------|----------|
| Available Option                           |           |                 |       |          |
| 2-speed control                            | Std.      |                 |       |          |
| Dust protector                             | Opt.      |                 |       |          |
| Auto-greasing kit                          | Opt.      |                 |       |          |
| Working Weight <sup>1)</sup>               | 2,200     |                 | kg    |          |
|  | (4,851)   |                 | (lbs) |          |
| Weight without chisel and mounting adapter | 1,817     |                 | kg    |          |
|  | (4,006)   |                 | (lbs) |          |
| Overall Length <sup>2)</sup>               | 2,951     |                 | mm    |          |
|  | (124)     |                 | (in.) |          |
| Weight of components                       |           |                 |       |          |
| Power-cell                                 | 926       | (2,041)         | kg    | (lbs)    |
| Chisel(standard)                           | 140       | (308)           | kg    | (lbs)    |
| Mounting adapter <sup>3)</sup>             | 243       | (535)           | kg    | (lbs)    |
| Required Oil Flow                          | 160 ~ 190 | (42 ~ 50)       | lpm   | (gpm)    |
| Operating Pressure                         | 160 ~ 180 | (2,320 ~ 2,610) | bar   | (psi)    |
| Blow Frequency                             | 350 ~ 700 |                 | bpm   |          |
| Impact Energy                              | 7,433     | (4,990)         | J     | (ft.lbf) |
| Tool (chisel) Shank Diameter               | 140       | (5.9)           | mm    | (in.)    |
| Applicable Carrier Weight                  |           |                 |       |          |
| Optimal range                              | 28 ~ 35   | (62 ~ 77)       | t     | (klbs)   |
| Available range                            | 28 ~ 35   | (62 ~ 77)       | t     | (klbs)   |

Notes :

- 1) Total weight including standard tool, standard mounting adapter and spacers but excluding hydraulic hoses, fittings and mounting pins.
- 2) The length measured from the tool tip of the standard tool to the top of the breaker including mounting adapter.
- 3) Including standard mounting adapter, fasteners and spacers (for Top Type)



# **FINE 36** **TECHNICAL SPECIFICATIONS**

|           |               |
|-----------|---------------|
| FS#       | FHB-T36-E1    |
| Cre. Date | 30 MAR , 2012 |
| Rev. Date |               |
| Page      | 3 of 4        |

## **3. INSTALLATION SPECIFICATIONS**

|   |                           |                         |     |       |
|---|---------------------------|-------------------------|-----|-------|
| Gas Charging Pressure <sup>1)</sup>           |                           |                         |     |       |
| Back-head (Piston accumulator) <sup>2)</sup>  | 16 ~ 17                   | (233 ~ 247)             | bar | (psi) |
| High pressure accumulator                     | 60                        | (870)                   | bar | (psi) |
| Hydraulic Piping                              |                           |                         |     |       |
| Line size (min. internal diameter)            | 25                        | (1)                     | mm  | (in.) |
| Acceptable back pressure (max.) <sup>3)</sup> | 10                        | (150)                   | bar | (psi) |
| Hose connections of breaker                   |                           |                         |     |       |
| Oil supply (IN) & return (OUT)                | BSP 1" O-Ring Boss Female |                         |     |       |
| Pressure Relief (min.)                        |                           | 40 (600) + measured     |     |       |
|   |                           | max. operating pressure |     |       |
| Acceptable Hydraulic Oil                      |                           |                         |     |       |
| Operating temperature <sup>4)</sup>           | -20 ~ +85                 | (-4 ~ +185)             | °C  | (°F)  |
| Viscosity                                     | 1000 ~ 10                 |                         | cSt |       |

### Notes :





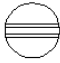



- 1) The prefill nitrogen gas pressure measured statically (breaker not operating) without down load on the tool at the stabilized gas temperature of +20 °C
- 2) The recommended value at the normal operating condition (supplied oil flow, oil temperature and viscosity, etc.)
- 3) The maximum allowed oil pressure at the breaker's connection point to the return line (measured statically without the breaker)
- 4) The allowed temperature limits when using the oil of viscosity grade 46



# **FINE 36** **TECHNICAL SPECIFICATIONS**

|           |               |
|-----------|---------------|
| FS#       | FHB-T36-E1    |
| Cre. Date | 30 MAR , 2012 |
| Rev. Date |               |
| Page      | 4 of 4        |

## **4. AVAILABLE TOOLS (CHISELS)**

|                             |   |   |  |   |    |       |
|-----------------------------|---|---|--|---|----|-------|
| Shank Diameter              | 140   | (5.51)  |  |   | mm | (in.) |
| <b>TYPE OF TOOL :</b>       |   |   |  |   |    |       |
|                             | Wedge Point   | Moil Point  | Blunt Point  | Conical Point   |    |       |
| Tool Diameter <sup>1)</sup> | 140 (5.51)  | 140 (5.51)  | 140 (5.51)   | 140 (5.51)  | mm | (in.) |
| Tool Length                 | 1300 (51)   | 1300 (51)   | 1300 (51)  | 1300 (51)   | mm | (in.) |
| Tool Weight                 | 141 (311)   | 136 (300)   | 152 (335)  | 134 (295)   | kg | (lbs) |
| Tool Shape                  |   |   |   |   |    |       |
|                             |  |  |  |  |    |       |

Notes :

1) The diameter of the tool portion outside the breaker body

- Other special designs are also available on request.